

Ground Plan of the Parish Church of St. Mary, in the
 Vicarage of Prots, & buildings, situated at Marston, being the Remains of the
 Ancient Abbey of St. Mary
 of the Church, though plain, has been a handsome structure of heavy stone.

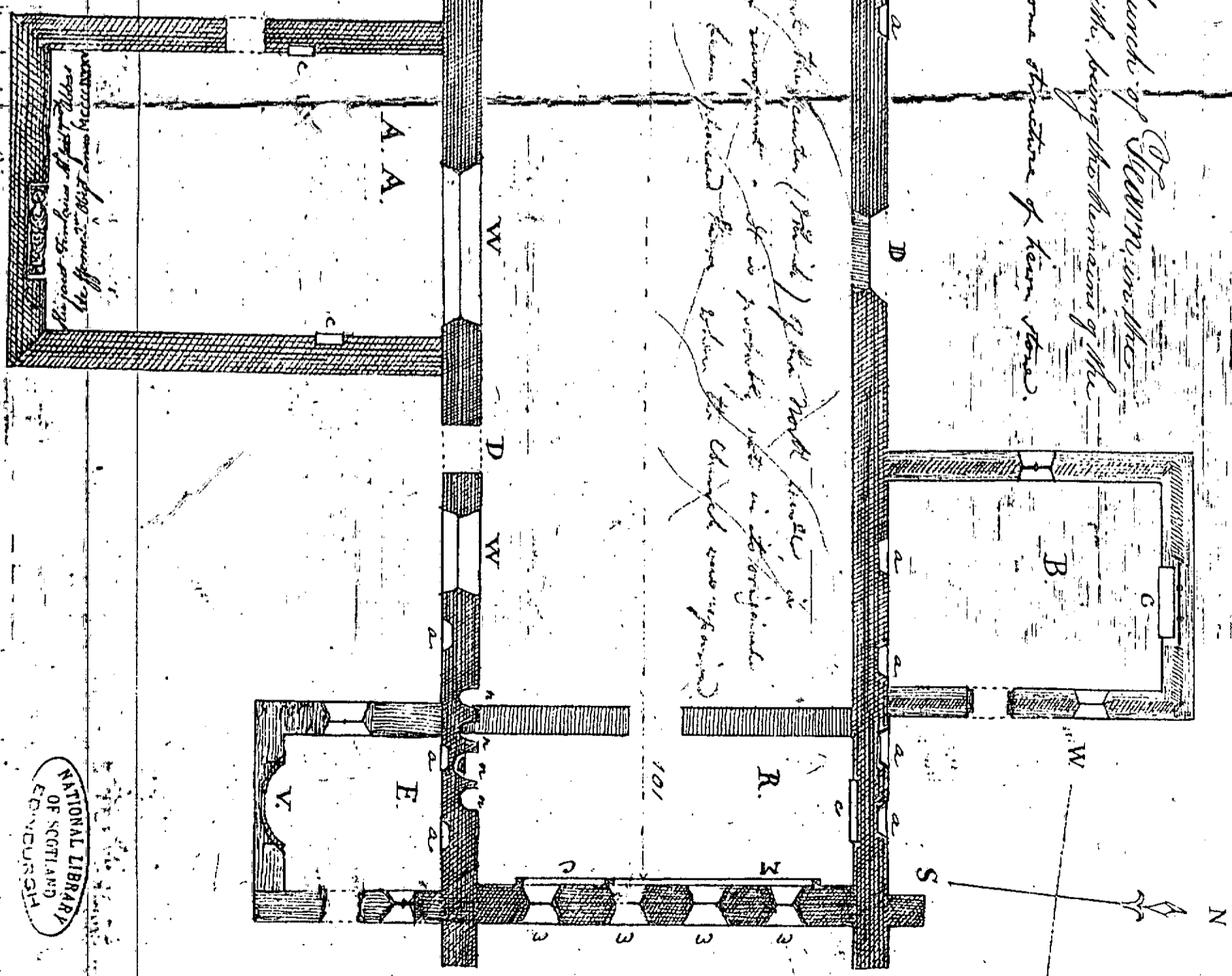
Modern

*When the Church, anciently the Parish (1081) of the North Wall, was
 a Wall with a heavy rampart. It is probably not in its original
 appearance, & many have been taken down since the Church was repaired.*

Length of Church, over walls, exclusive of buttresses 108 feet.
 Breadth of do do do do do 34



Scale of Feet =



*When the Church, anciently the Parish (1081) of the North Wall, was
 a Wall with a heavy rampart. It is probably not in its original
 appearance, & many have been taken down since the Church was repaired.*

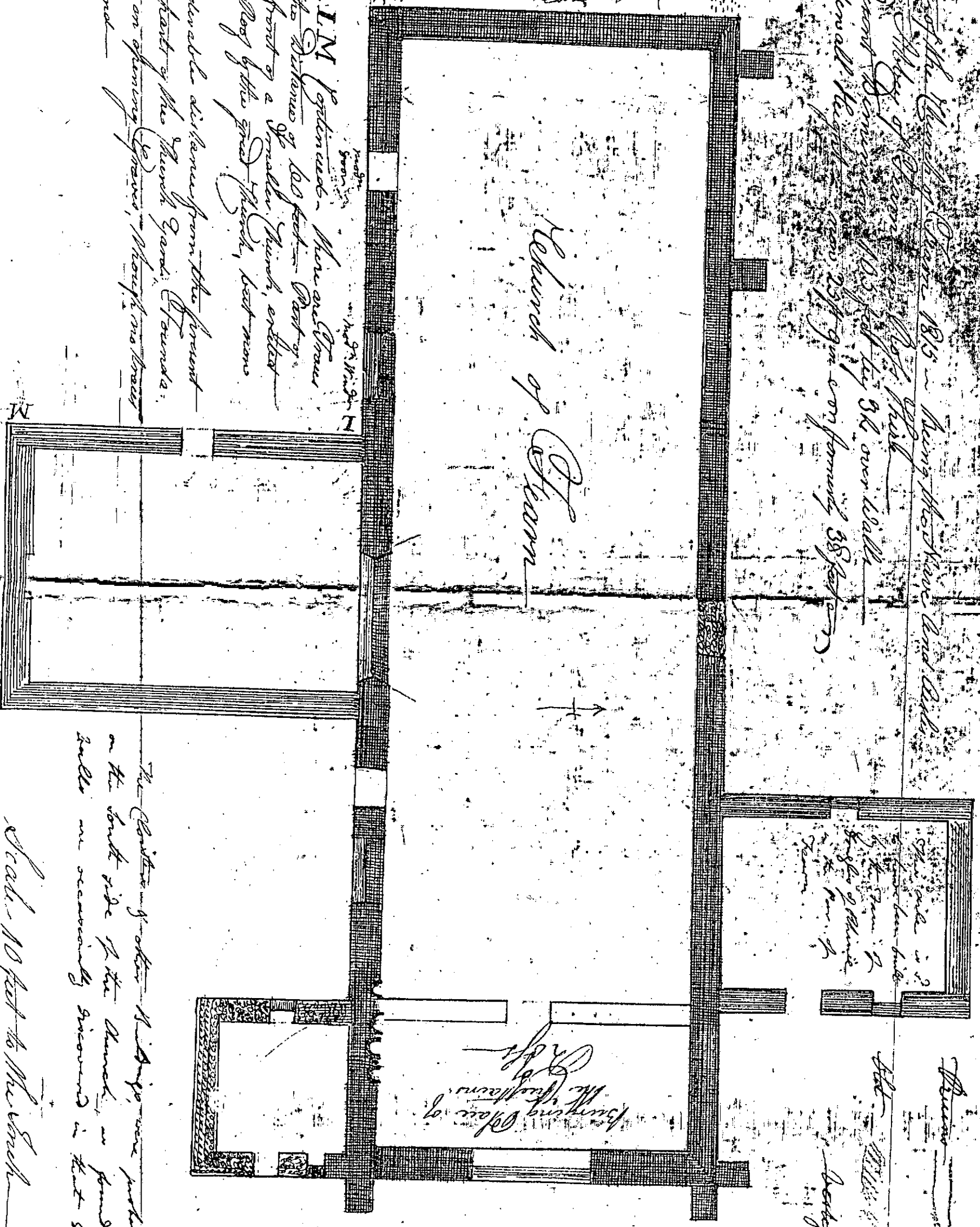
NATIONAL LIBRARY
 OF SCOTLAND
 EDINBURGH

Plan of the Abbey Church of St. Mary & St. Peter, 1781

Site of the Abbey of St. Mary & St. Peter, 1815 - Henry the Ninth and Ruler of the Abbey of St. Mary & St. Peter, 1103 feet by 312 over walls - Edward the First was 247 yds in circumference 358 feet

Orientation of Building according to 21 Oct 1815

Church of St. Mary



Vertical distance I.M. between the main aisle and the side aisle of the building to the distance of 100 feet - Part of which line is the front of a smaller church, erected after the fall of the great church, but now demolished - At a considerable distance from the present church, in different parts of the church grounds, there are discovered an opening of graves, though no bones are left above ground

Altar - 11 feet 6 inches high - 11 feet 6 inches wide - 11 feet 6 inches deep - 11 feet 6 inches long - 11 feet 6 inches high - 11 feet 6 inches wide - 11 feet 6 inches deep - 11 feet 6 inches long

Burial Place of the Abbots

The position of the 11 steps were probably situated on the south side of the church, in front of the gate in connection with the church.

Depth 10 feet to the wall



Length of Church, over walls, exclusive of buttresses 108 feet
Breadth of do do do do 34

Part of the Low Stone Wall

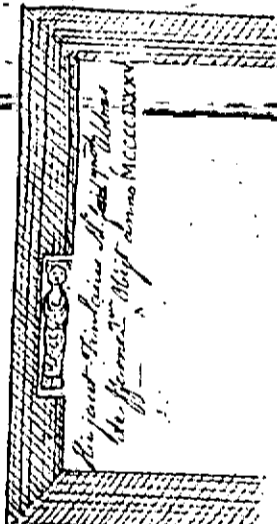
References -

- Old Work, Eastern, or part in repairs
- Old Work, Decaying -
- Old Work in Ruins -
- Remnant of old Wall
- Remains of Old Buildings
- More Modern Work

From X to X

Notice of some remains of the Little Kirk, built after the fall of the Abbey (which was part of the wall) -
Spire placed in 1815, where a large fragment of stone was dug out - and many such have been formerly discovered within, & some within the present church ground.

- AA -
- BB -
- CC -
- DD -
- EE -
- FF -



NATIONAL LIBRARY OF SCOTLAND EDINBURGH

References

- a, a, v - Narrow or old windows, of about 8 feet high, 2 feet 6 inches from back to back, 19 in the middle of bay height, & placed 50 feet from the ground.
- b, b - Old window, 3 1/2 feet high - width as the above, about 10 1/2 feet from ground.
- W.W.W. - Gothic windows, now modernized & partly filled up, as that the eastern figure cannot be known - the great window in the tower had been 18 feet high.
- R - Pinnacles, ribs & bands of the tower & present height of tower of Dept - see the plan of Dept.
- c, c, c, c - Hoops of arms.
- D, D - A brick foot of arms, 4 1/2 feet high & above is a Gothic window 17 1/2 feet high.
- D, D - A Gothic door, 8 feet high, 4 1/2 wide - now filled up.
- M - Modern door, in place of 17 1/2 feet Gothic door.
- V - Siphon monument of the late Admiral Sir John Lockhart Dept.
- m, m, n, n - Vaulted base in the wall, the burial place of the regular monks in the cell, where the effigies of saints had been placed in a sitting posture.

H - A modern Venetian window, in which is now the Gothic top window.
There is a similar one in lead & glass top, above the present window.

11, 12, 13, 14 - Old windows, with glass, 12 feet high, about 8 ft from the ground for the bodies of a window bay, over the south wall height.
In opening, a grave within the church in 1815, the skull of a child & fragments of iron were found.