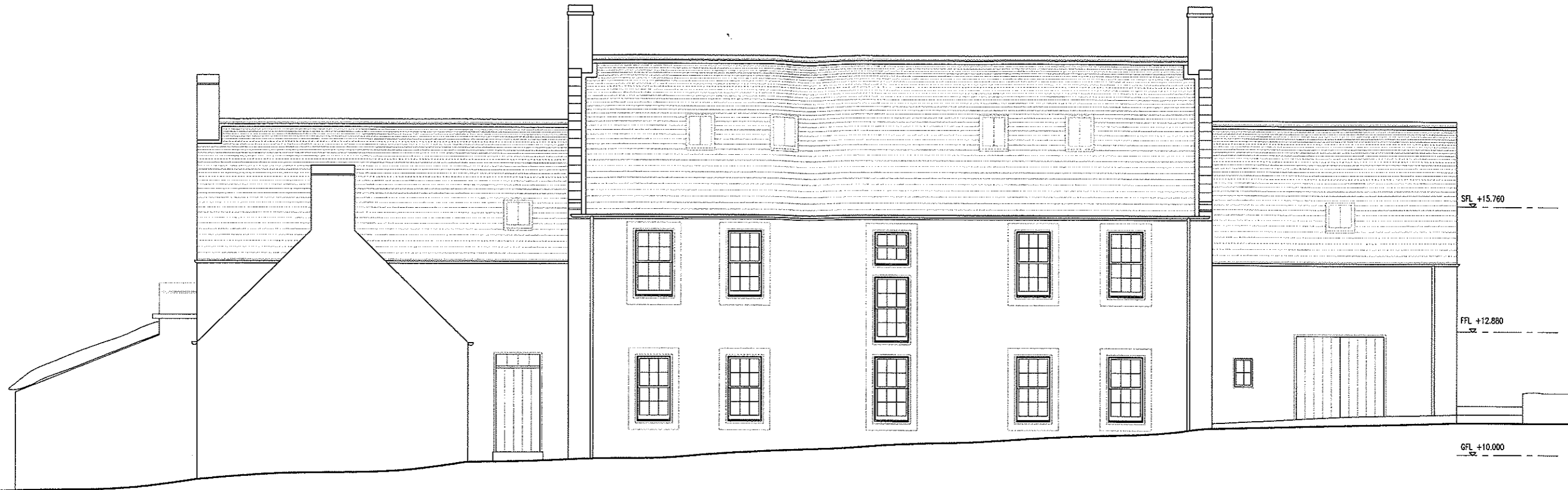


1. Ballachulish slate laid in diminishing courses 2. Sandstone 3. Lime Harling (recipe to be defined following analysis of materials on site by the Lime Centre) 4. Weatherings - mortar fillets on lead soakers
 5. Single glazed sash & case windows 6. Conservation velux rooflights 7. Timber lined doors for paint finish (colour to be confirmed) 8. Cast iron rainwater goods (coloured to match render)

Revision Description:



North Elevation



South Elevation